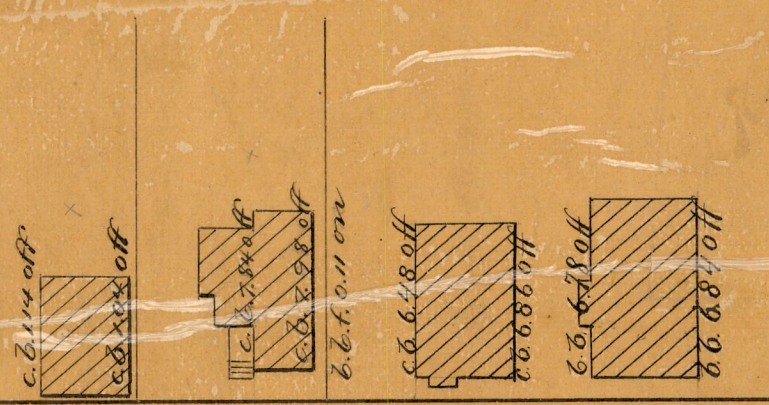


NORTH MAIN STREET

Granite Bound on N. St. $DA = 52.65$
Granite Bound on line of N. St.

50

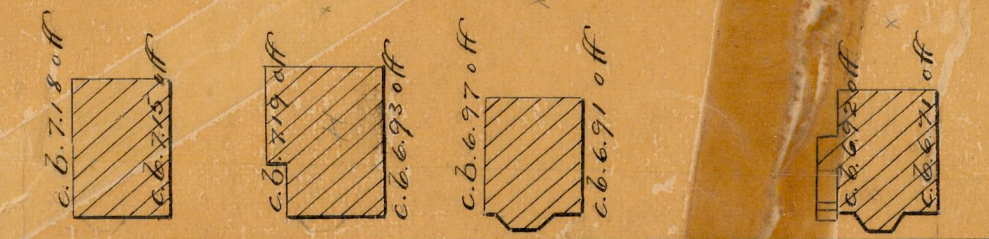


WOODBINE STREET

HIGHLAND ST.

Granite Bound 0.05 off

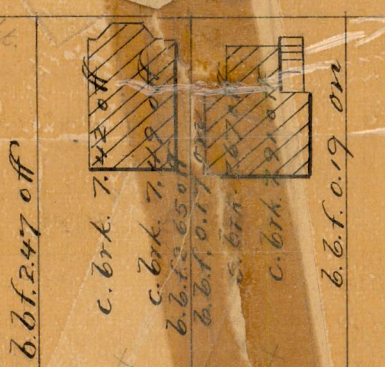
$AB = 1099.32$



$DC = 1095.12$

Granite Bound 0.03 off

Granite Bound 0.26 off



Granite Bound 0.11 off C. St.

50

CAMP STREET

95
B-2A

Scale 50 feet per inch

OFFICE No. 8928